



AGRI-PLAN CONSULT FIRM

NAME OF THE COMPANY AND LEGAL FORM	AGRI-PLAN CONSULT
Registration	KENYA
Registered Office	Nakuru office, KFA BUILDING P.O BOX 3718-20100
Registration Number	BN-GVCJAR8
Represented by the undersigned	SAM KIPKOSGEI KIPRONOH
Contact person (telephone number, fax number, possibly e-mail address)	SAM KIPKOSGEI KIPRONOH +254-750374294 +254-715941622 Email: agribizfirm2016@gmail.com
Financial institution Under the name of Account number for the payments	EQUITY BANK KENYA AGRI-PLAN CONSULT 1460277811920 KENYA COMMERCIAL BANK AGRI-PLAN CONSULT 1314618709

ABOUT AGRI-PLAN CONSULT

AGRI-PLAN CONSULT stands for major improvement on sustainable livestock agribusiness sector through proper planning and resource utilization in Kenya and Africa at large. **Agri-plan** is on record as a leading consultancy firm in planning and construction of modern farm structures in the vast agriculture sector. The firm has set its priorities in modern structures and housing development cutting across the livestock enterprises with the aid of maximum utilization of resources and guiding investors on the best model housing plans for quality and safe food production and accelerated economic growth on a sustainable basis. In order to achieve this goal, we offer proper whole farm planning, Modern farm structures planning, designs and construction as well as agricultural project implementation. Our special interest to us is livestock enterprise including dairy, piggery and poultry mainly on housing unit plans and designs as well as construction.

The planning expertise ensures that farmers and investors are engaged in well designed and modernized plans based on recommended standards with profitable and sustainable agribusinesses models through proper and analysis of enterprise viability, good and well developed production systems and infrastructure. We have worked with individual investors and development partners in setting up livestock infrastructure as well as implementing livestock projects.

NATURE OF BUSINESS

We are a team of experts in the fields of agribusiness Projects planning, animal production and modern livestock structures plans, designs and construction. We specialise in project planning consultancy, research and agricultural structures development and implementation. Our adoption of the consultancy and value chain approaches ensures that investors and farmers are engaged in proper planning of each and every profitable and sustainable agribusinesses.

LIVESTOCK PROJECTS

AGRI-PLAN has a team of Agricultural projects planning experts, livestock experts in the architectural section with specific interest in the planning and farm structures to attain maximum animal comfort and proper efficiency. We specialize in consultancy as well as actual implementation.

We have consulted for various investors and farmers in different agricultural value chains from planning design planning to actual implementing for various livestock value chain (beef, dairy, goat, pigs, poultry, aquaculture and fodder) both in Kenya and across the world.

EXTENSIVE LIVESTOCK AND EXPERTISE IN DAIRY DEVELOPMENT:

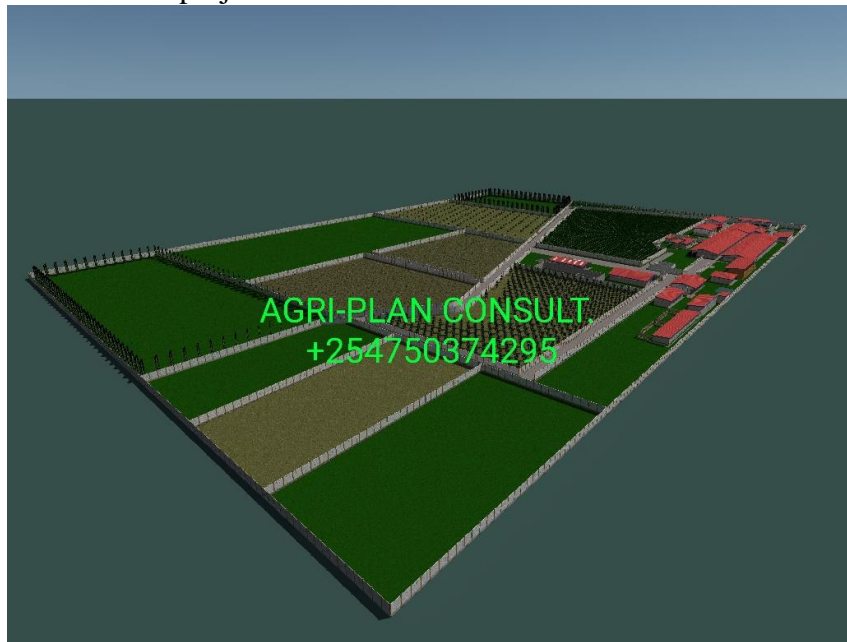
- We provide services on proposals writing and development, feasibility studies and business development for various agribusiness projects.
- We also provide assistants and lead on projects from planning to implementations by providing services on proper planning and construction, mainly on dairy barns, poultry coops, Beef under feedlot systems, shoats and fodder stores to set up proper structures and also to allow maximum use of available land.

- We train farmers on the best production models to adopt as per the markets requirements.

AGRI-PLAN SPECIFIC SERVICES

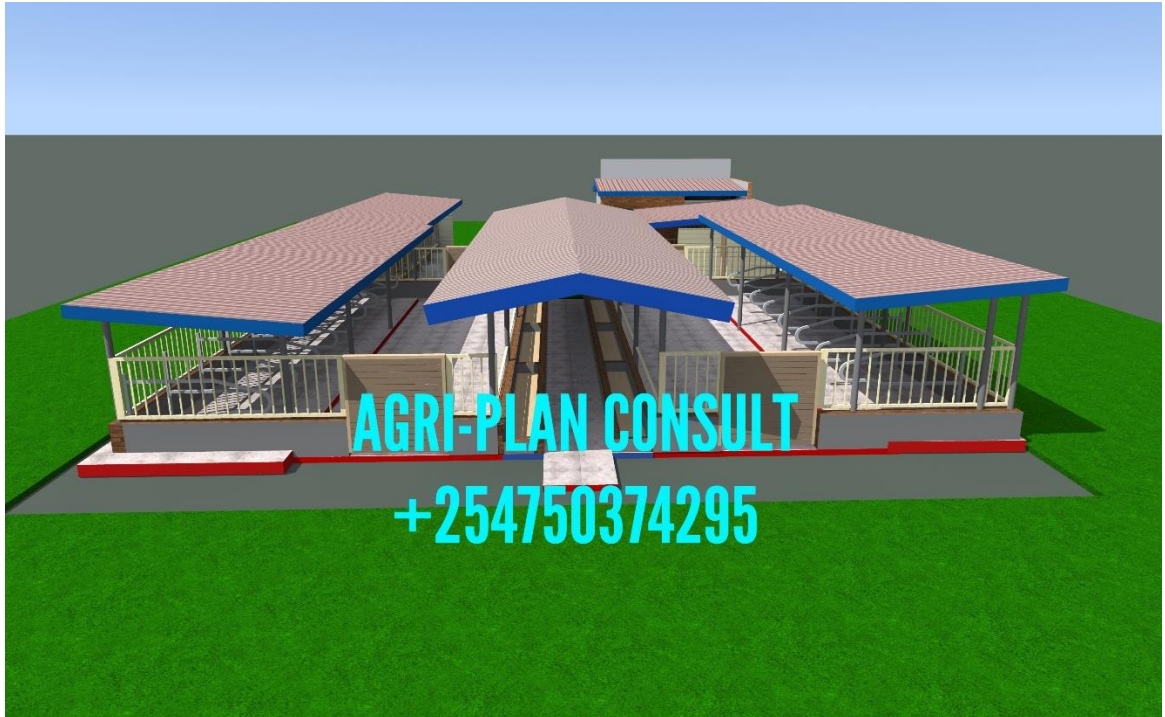
1.0 WHOLE FARM PLANNING.

Farm planning entails proper setting up of the available land resource to maximize its utilization, it allows the investor to identify all the perfect areas to set his or her project in Available land.



2.0 MODERN DAIRY UNIT PLANS, DESIGNS AND IMPLEMENTATION.

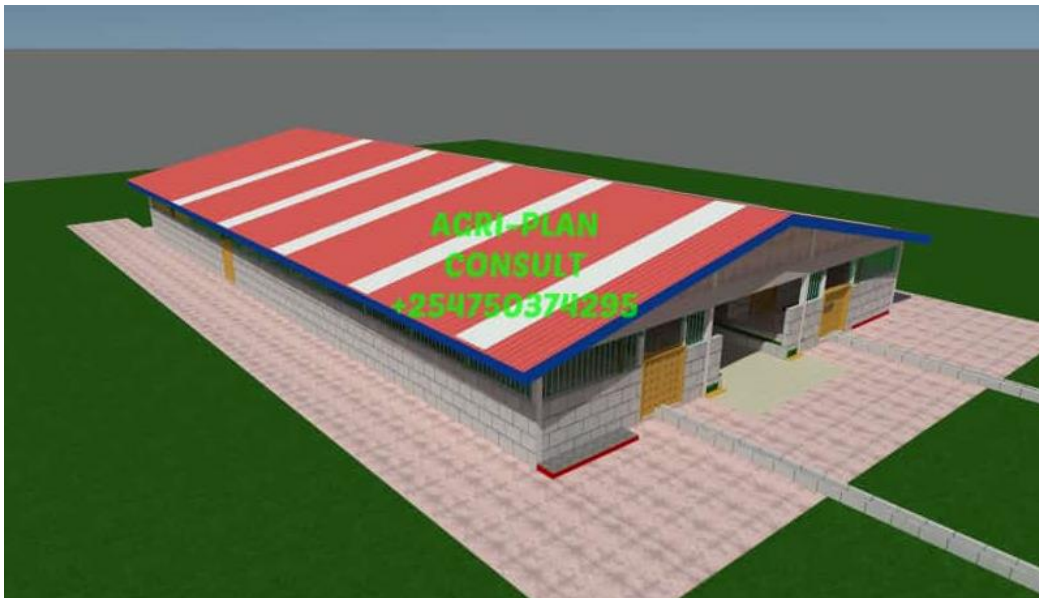
This is the main service offered by Agri-plan consult, this service involve planning and implementation of modern, efficient and comfortable dairy barns, both small and large scale capacities.







Complete 10 capacity modern dairy unit







Complete 30 modern dairy unit



84 capacity dairy unit plan



AGRI-PLAN CONSULT
+254750374295



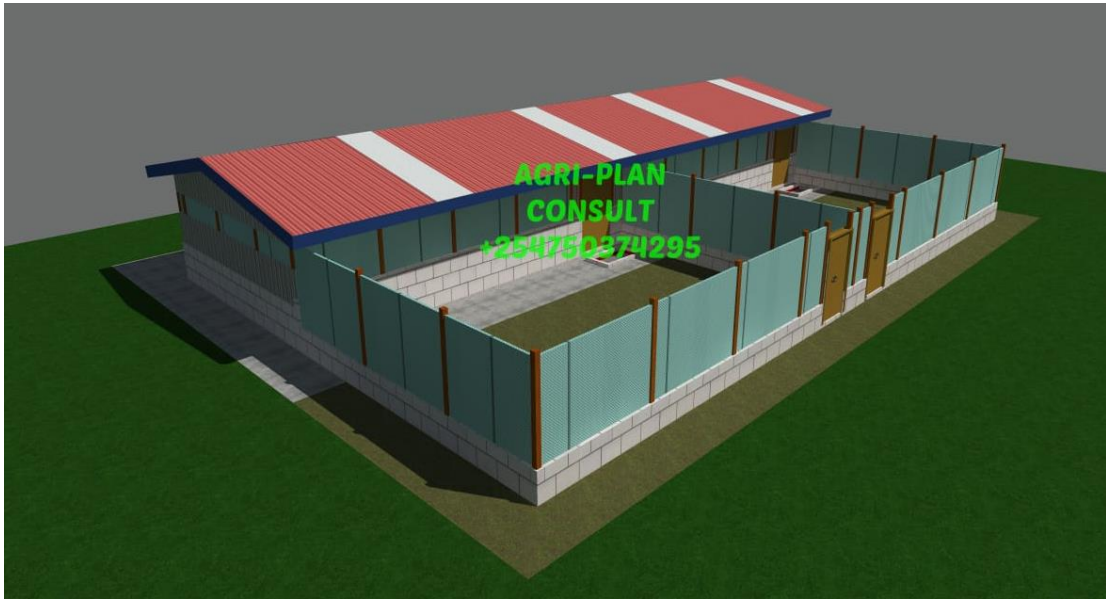
AGRI-PLAN CONSULT.
+254750374295

TECNO
CAMON 17

Complete 84 capacity modern dairy unit.



3.0 GOATS AND SHEEP HOUSING PLANS DESIGNS AND CONSTRUCTION





3.0 PASTURE, FODDER AND FEEDS STORES

Feeding is core to a successful livestock production enterprise. With increase in seasonality of rains and prolonged dry seasons, the Kenyan farmer still has to maintain high milk production on his farm. The main challenge common across smallholder farms, is invariable availability of pasture and fodder resources across seasons. And when there are some pastures and fodders, the amounts available mostly are inadequate both in quality and quantity.

- ✦ We plan design and construct modern feeds stores structures.
- ✦ We practically train on the establishment of various types of pastures and fodders
- ✦ Supply and delivery of fodder seeds.



Boma Rhodes supply to kenya Methodist university(KEMU)



Certified Boma Rhodes seeds supplies to mogotio county under KCSAP



Certified Boma Rhodes seeds supplies to mogotio county under KCSAP

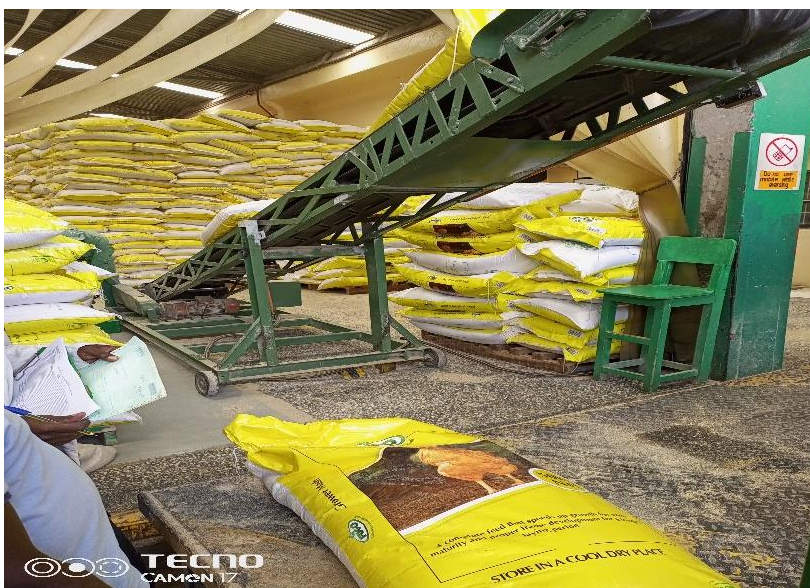


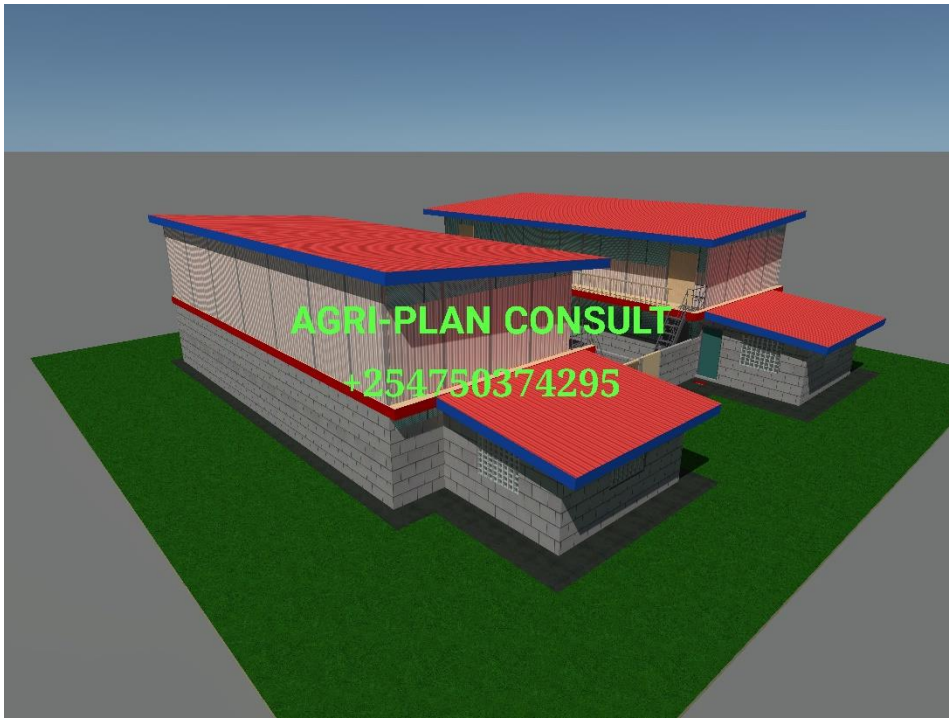
[Certified Boma Rhodes seeds supplies to mogotio sub county county under KCSAP](#)

[4.0 EXPERTISE IN POULTRY DEVELOPMENT](#)

Commercial oriented knowledge for poultry production is inadequate among the small scale farmers. The reduced production causes inconsistency in the quantities supplied to the market and yet the demand is fairly constant at both rural and urban level. Poultry remains one of the livestock enterprises with high potential of empowering rural farmers.

Agri-plan works in selected value chain on poultry production venture, we major on projects proposals writing, viability of the project analysis and finally establishments of the project through proper housing planning and construction with proper model selection.





MODERN STOREY POULTRY UNIT





MODERN STOREY POULTRY UNIT

Projects assignments

Focus are	Project and Region	Affiliate
Project planning and implementation	300 capacity dairy venture, nyandarua county, Kakamega county.	Individual farmer MR WILSON 0722728122
Beef production and fodder management, planning and implementation programme.	Maximum utilization of a 2800 acres in Zambia,	Investor.
Poultry	Nakuru, Kiambu, Rwanda and Tranzoia.	Individual farmers.
Integrated aquaculture and poultry system. Planning and supervision.	Kisumu	Individual farmer.
Pig production. Planning and implementation	Nairobi,Ghana, Zimbabwe, Nakuru	Individual farmers. MR FOREST +5926975683
Intergrated systems.	Zimbabwe, kakamega, Uganda, uasingishu and Baringo.	Individual farmer. DIANA +256782777608
Dairy project viability(feasibility study)	Tanzania	Investor(IPM) ADAMJE 0708016553
Fodder seeds and production	Nakuru, Nyahururu, machakos	Individual farmers.
Dairy venture implementation	Mombasa	Individual farmer. PATRICK 0722810321
Dairy value addition investment planning and implementation.	Makueni county, emali	Cooperative BRIGHTON 0720171025
Support of climate smart project in Baringo county	Baringo county (LEMBUS PERKERRA WARD,KOIBATEK WARD AND MOGOTIO WARD)	World bank project (KCSAP FUNDED PROJECT)
100 capacity dairy project, from planning to implementation.	Kamakis, kiambu county kenya	Individual farmer. MR PETER: 0722893082
126 capacity dairy unit planning.	NAITIRI	Individual farmer.

60 capacity dairy project planning and implementation.	ELDORET	INDIVIDUAL FARMER SHEILA 0721864265
2000 litres per hour capacity dairy processing plant planning and design development	ZAMBIA	COUNTRY PARLOUR LIMITED MR BORNWELL +260956765972
40 capacity dairy project planning and implementation.	BUSIA KENYA	INDIVIDUAL FARMER SUSAN 0711320959
400 Capacity modern Dorper sheep breeding farm project development, planning and implementation.	NYAHURURU, KENYA	INVESTOR MR RON; +96565927747
Modern dairy unit plans designs and construct assignment.	KERINGET, NAKURU COUNTY	INDIVIDUAL FARMER EDWIN +1(443)2045899
Modern dairy unit planning and expansion of a 20 capacity unit to 52 capacity	KINANGOP, NYANDARUA COUNTY.	INDIVIDUAL FARMER. Dominic Ndungu 0768484636